



TONE WINNER

SW-D2000

SW-D4000

SW-D6000

SW-D8000

SW-D8000PRO

SW-D9000

UserManual



Product packing list

Number	Item	Quantity
1	Manual	1 piece
2	Power Cable	1 piece
3	Certificate of qualification	1 piece

Pollution Control Sign and Content Description



The symbol indicates that the product can be reused. The figure indicates the term of service of environmental protection. The product will not cause environmental pollution or affect human body and property within the term of service expressed by the figure since the date of manufacture as long as the safety and operating precautions on the product are obeyed.

Name and Content of Toxic or Harmful Substance or Element in the Product

Name of Parts	Toxic or Harmful Substance or Element					
	Lead Pb)	Mercury Hg)	Cadmium Cd)	Hexavalent chromium Cr)6+	Polybrominated (PBB)	Biphenyls polyphenyls (PBDE)
Body/Box	○	○	○	○	○	○
Equipped Baseplate/ Electrical Part	×	○	○	○	○	○
Plastic Structural Member	○	○	○	○	○	○
Metallic Structural Member	○	○	○	×	○	○
Cable	○	○	○	○	○	○
Transformer	○	○	○	○	○	○
Transformer Loudspeaker/ Microphone	×	○	○	×	○	○

Marks:

“○” means the content of the hazardous toxic substance is lower than SJ/T11363-2006 standard required.

“×” means in a homogeneous material of the component the content of the hazardous toxic substance is higher than SJ/T11363-2006 standard required.

Note: “×” as there are no substitutable substances under the existing technology

Thank you for using our audio products. With the philosophy of “high technology, high quality and high taste”, we make products with durable materials, exquisite technique, rigorous circuit & advanced technology and offer professional service!

Contents

Safety Warnings And Protective Measures-----	2
Main Features-----	4
Rear Panel-----	5
Function Introduction-----	9
Function Introduction And Setting-----	11
Display Screen-----	15
Mobile Phone App-----	15
Subwoofer Connections-----	16
Subwoofer Tests -----	16
Subwoofer Adjustments-----	17
Specifications-----	19
Equipment Safety Standard: Class I-----	21
Problem Shooting-----	21

Safety Warnings and Protective Measures

 WARNING ELECTRIC DANGER DO NOT OPEN	
<p>To reduce risk of electric shock, do not remove the outer cover (or rear panel).</p> <p>For maintenance, it should be carried out by qualified maintenance people.</p> <p>To avoid fire and electric shock hazards, do not get the unit wet or damp.</p> <p>Equipment safety standard : Class I</p>	

- 1 Read the protective measures: read all warning messages about protection and operation in the instructions carefully before using the equipment.
- 2 Follow instructions: please follow the instructions and do not violate the instructions.
- 3 Place the product on where manufacturer recommends: to avoid overturning, do not push too hard or suddenly stop when moving.
- 4 Keep away from water and moisture: do not place equipment near water such as bathtub, basin, sink, washing machine, etc. Do not use equipment at high temperatures or high humidity environment, such as a damp basement.
- 5 Cleaning: do not use liquid or mist cleaners. Please use dry cloth to clean. Turn off the machine and power off before cleaning the equipment.
- 6 Power supply: use the power supply according to marks and tags. Connect and place the wires properly. Do not step on wires to avoid damage. Pay special attention to wires to plugs, receptacles and connecting ports.
- 7 Ventilation: the cabinet of equipment is designed with venting holes. To ensure reliable performance, please avoid overheating and do not cover the equipment. Do not use the equipment on beds, sofas, carpets etc.
- 8 Keep away from heat: do not put that machine near heat sources, such as radiators, stoves and other objects that generate heat (including power amplifiers).
- 9 Prevent unknown objects or liquids - objects or liquids should be prevented from falling through the holes into the equipment, because it might contact with current or live parts that might cause fire or electric shock. Do not place the equipment in rain or water splashing place. Do not put water containers such as vases on top of it.
- 10 Please connect well all input/output wires before switching on.
- 11 Thunder and lightning: unplug the power cable in thunder and lightning weather because it can effectively prevent lightning impulses to protect the equipment.
- 12 Protections: unplug the machine when you do not use it for long period. Good grounding can prevent the machine from being damaged.

- 13 Maintenance: do not open the cabinet without professional instruction to avoid electric shock. Contact with the product managers where you buy this machine in the following cases:
- a) Unknown parts or liquid enter the machine.
 - b) The machine is soaked.
 - c) The machine works abnormally.
 - d) Machine falling or damage.

- 14 Battery: for environment protection, please dispose batteries in appropriate ways.

- 15 Disconnection device of main power supply: this machine uses power plug and coupler as the disconnecting devices. Power plug and coupler should be easily operated.

- 16 This product is only suitable for safe use in altitude below 2000m.



- 17 This product is not suitable to be used in tropical climates.

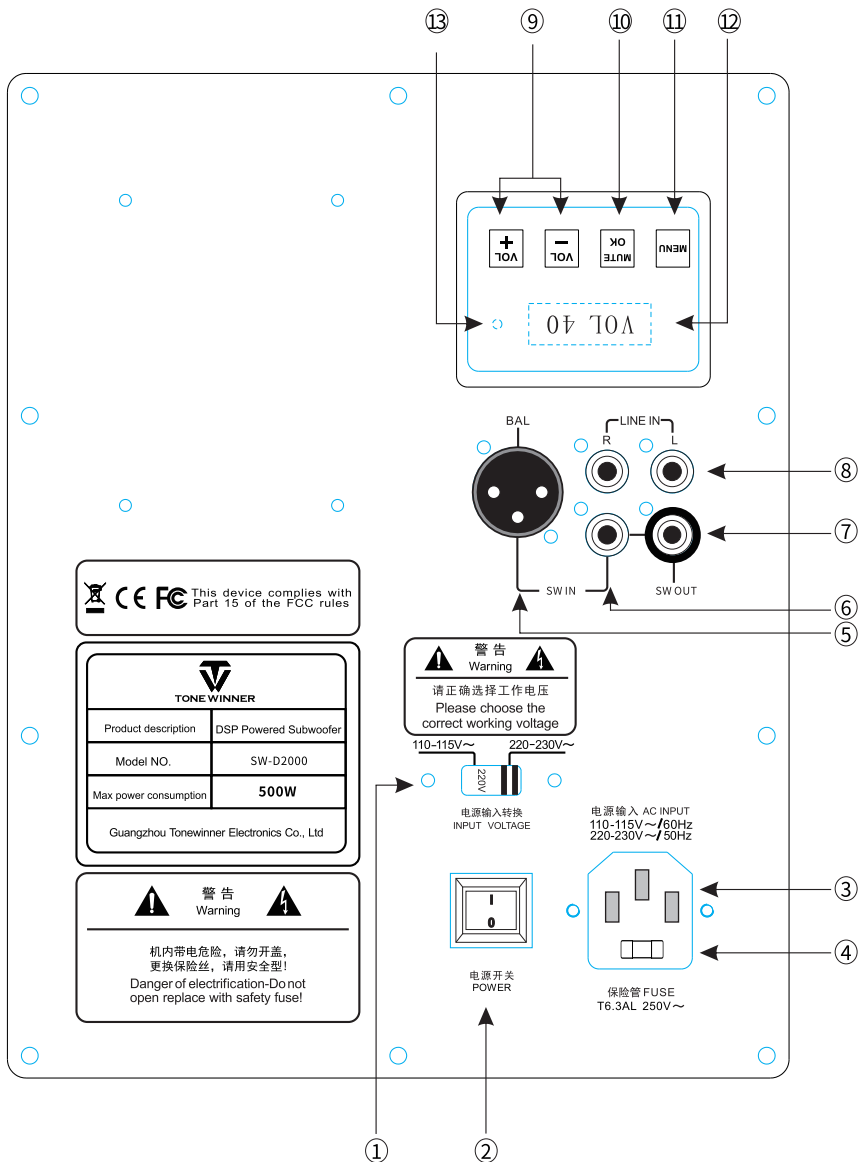


- 18 Warning: Equipment safety standard Class I equipment should be connected to socket or electricity grid with grounding protection.

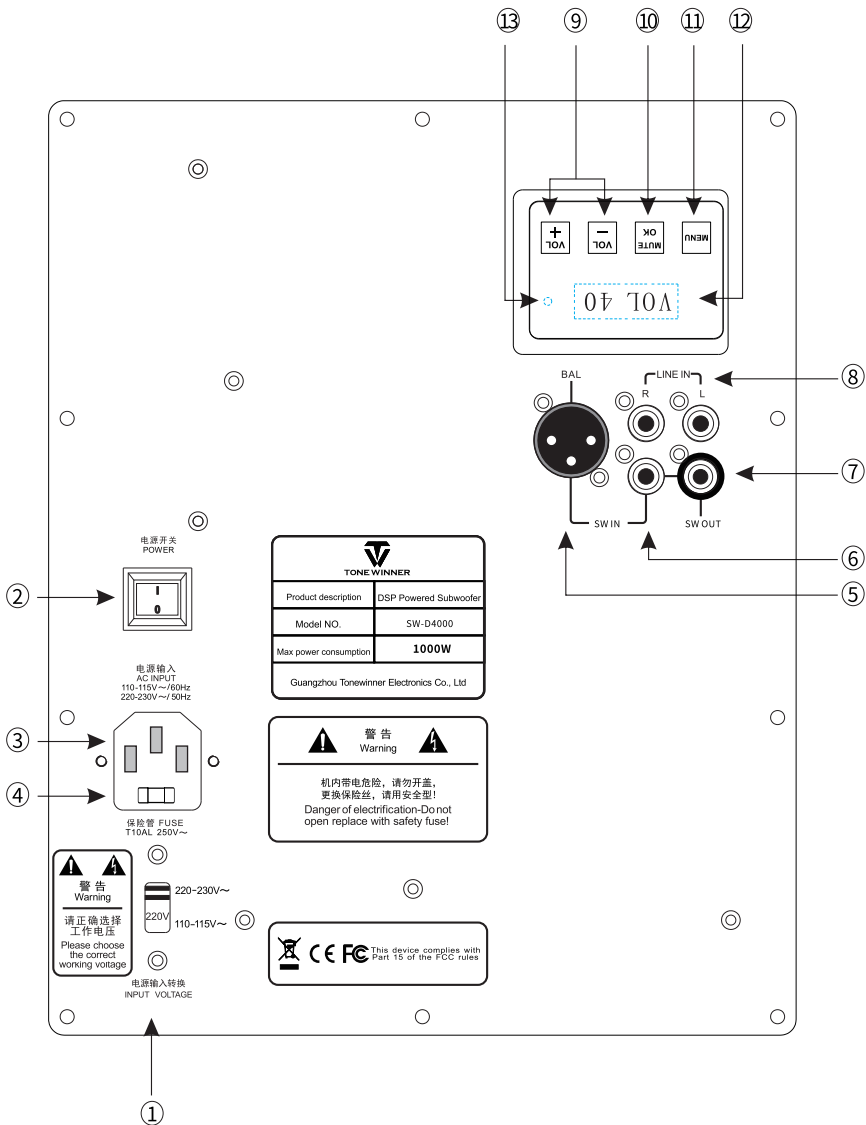
Main Features

- Strong DSP signal processing
- Strong power output
- Full functional Mobile phone App control
- Full functional touching control
- LCD display screen
- Build-in 3 working modes: Normal, Deep, Strong
- Support 7 bands EQ adjustments
- Support high pass/low pass cut off frequency, slop rate and On/Off switch adjustments etc
- 0°-180°phase adjustment
- Support no signal goes into standby status, signal goes into working status. Adjustable turn on control level
- Adjustable matching level which can match input level.
- Power voltage 110-115V~ (60Hz)/ 220-230V~ (50Hz)
- Support wireless firmware upgrade
- Long stroke, strong magnetic and big power speaker driver

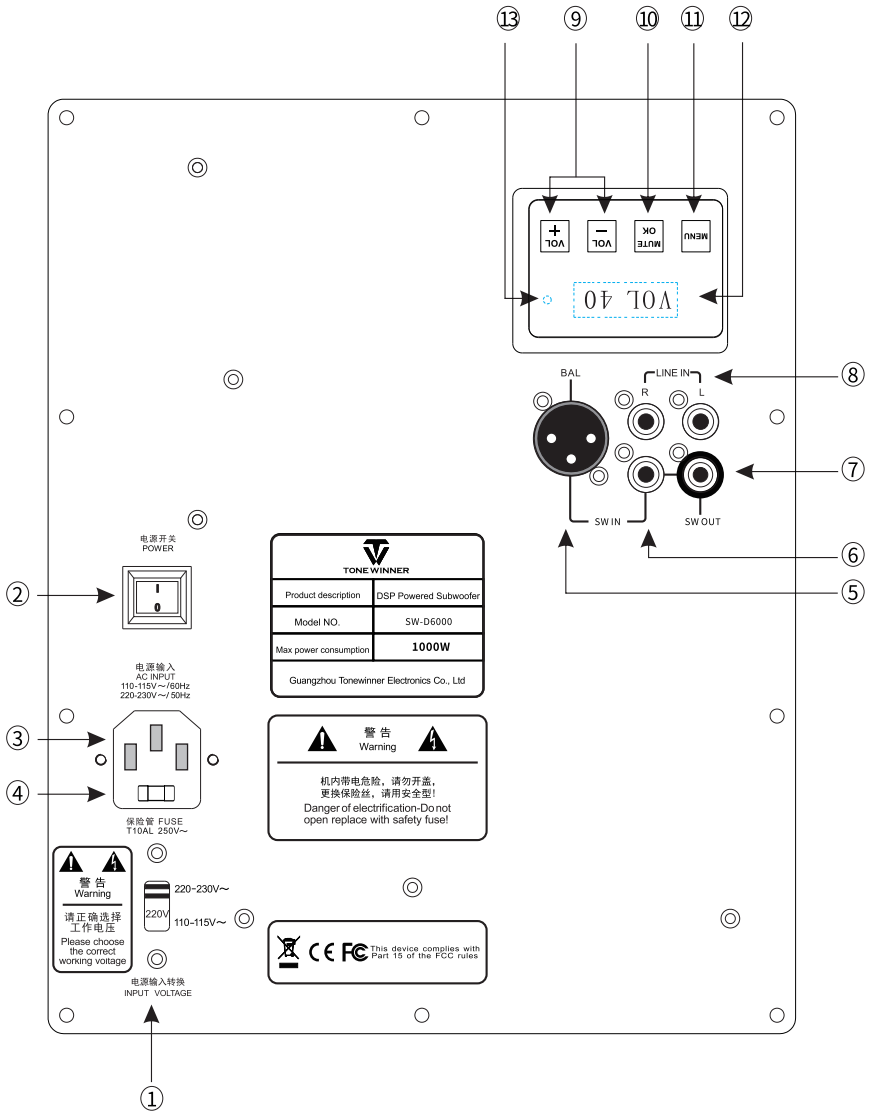
SW-D2000 Rear panel:



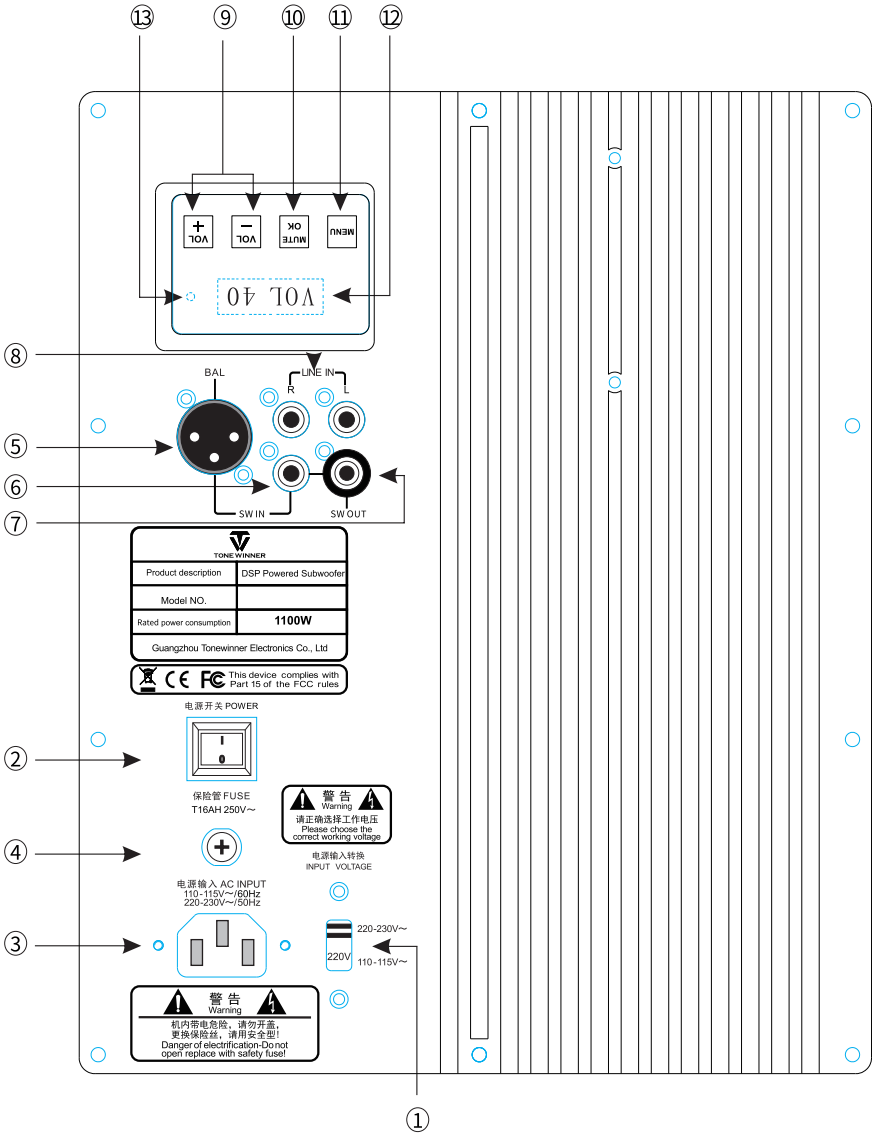
SW-D4000 Rear panel:



SW-D6000 Rear panel:



SW-D8000/D8000PRO/D9000 Rear panel:



Function introduction

① Power supply voltage switch (110-115V/220-230V)

- Switch the power supply voltage input based on your power grid voltage.
- Set to "220" for 220-230V/50Hz power grid voltage.
- Set to "110" for 110-115V/60Hz power grid voltage.

② Power switch POWER

- Press "I" to connect power and "O" to cut off power.
- Always cut off power before plugging or unplugging the power cord.
- A subwoofer enters the working state when power is connected, and the display screen lights up.
- After a preset time with no signal, the subwoofer enters a low power state.
- If signal input resumes or buttons are pressed, subwoofer returns to working state.
- (In order to obtain the best listening effect, it is recommended to put the subwoofer in a power connection. If you do not use a subwoofer for a long time, be sure to cut off the power.)
- **Attention: If you want to reboot the unit after turn off, please wait until the display screen is completely off.**

Power cord socket

③

- Connect to conventional AC power supply.
- Confirm power voltage matches power supply voltage to avoid damage

FUSE

④

Replace the fuse with correct value:

- SW-D2000: T6.3AL 250V
- SW-D4000: T10AL 250V
- SW-D6000: T10AL 250V
- SW-D8000: T16AH 250V
- SW-D8000PRO: T16AH 250V
- SW-D9000: T16AH 250V

⑤ SW balance signal input port

- When your front-end device only has a balanced output use dedicated balance input/output cable for balanced signals.
- Ensure wiring matches on both ends:
Pin1: SIGNAL GND, Pin2: SIGNAL+, Pin3: SIGNAL-.

⑥ SW un-balance signal input port

- For ultra-bass RCA unbalanced signal input.

⑦ SW signal output port

- Ultra - bass signal RCA output port. When there is signal input from LEF unbalance, there will be signal output here.

⑧ Line in L/RR CA stereo signal input

- Input stereo analog audio signal.

9 VOL+, VOL-button

- In normal working state, adjust volume with these buttons. as volume + and volume -.
- The maximum volume of this machine is "60"
- Adjust the volume to make the sound of the subwoofer and the sound of other speakers in the entire system blend well.
- The sound of the subwoofer should be integrated with the sound of other speakers.
- When you do parameter adjustment for this machine, this key works as "down" or "up", you can change the menu option.

10 MUTE/OK button

- Touch the key to enter/exit menu or sub-menu.

11 MENU

- When the device is in a normal working state, touch this key as "mute".
- When the device is in a "mute" state, touch this key to relieve the "mute".
- Press volume + and volume - at the same time, it can relieve "mute", too.
- When the device is set for parameters, touch the key to show "confirm" or "enter the next submenu".

12 LCD display

- When the device is in a normal working state, the current volume is displayed.
- When user adjust parameters, the menu adjustment content can is displayed.

13 Power Indicator

- Power indicating LED
- When the subwoofer is in working status, display screen on, power indicating LED off.
- When no signal status up to reset time, the subwoofer will go into low consumption status, then display screen off, indicating LED power on.

Function introduction and settings

- Touch the "MENU" key to enter the menu, currently, touch the "VOL-" and "VOL+" key to switch to the sub-menu, then press "OK" key to confirm the option, the corresponding settings are performed.

1. Ports Type/Mode

Ports Type Open

Mode Normal

- Ports Types: you can select Open or Sealed mode. (Note: SW-D2000 does not support Port Type selection)
- There are 4 modes built in the subwoofer: Deep, Normal, Strong and User .
- Those 3 modes of Deep, Normal, and Strong are preset with high and low frequency and specific EQ. The high and low frequencies are displayed in HPF and LPF menus, and users can modify it. Note preset EQ is not able to modify. The User mode only sets with high and low frequency.
- For 4 modes, user can modify all settings other than "preset EQ", including high and low pass, EQ, and related settings will be remembered in the corresponding mode. When recall this mode later, the relevant settings are still valid.
- For those 3 modes of Deep, Normal and Strong, the EQ set by the user will overlap effect with the preset EQ.
- If user does factory default for any mode, or for the whole unit, all related settings will be cleared.

2. EQ

Menu EQ ON

Menu ON EQ7

Fc	Q	G
200	2.0	0.0

- When EQ is OFF, EQ1 to EQ7 are invalid; Only when EQ is ON, you can log in the equalizers to adjust parameters.
- After entering the EQ settings, the subwoofer provides a 7 bands of parameter EQs, you can set any frequency point between 20Hz-250Hz.
- FC frequency adjustment range: 20Hz - 250Hz
- Q value adjustment range: 0.4 - 10
- G gain adjustment range: -9db - +9DB

3. LPF adjustment

Menu
LPF ON

LPF	OCT	Fc
ON	-24f	150

- Adjust the cut-off frequency and slope rate of the upper end of the subwoofer (low pass) .
- Adjust the cut-off frequency repeatedly to make the bass connection of the entire system smooth enough.
- FC cutting frequency adjustment range: 70Hz-250Hz.
- OCT slope rate adjustment: -12i(-12db IR)/-24i(-24db IR)/-24f(-24db FIR)
- LPF low-pass switch: ON/OFF. When the switch is OFF, the signals below 500Hz will all enter the subwoofer. (Here no high -pass filter is involved)

Remarks:

The FIR filter option provides -24dB attenuation per frequency of frequency range. It has perfect linear phase shift characteristics. The signal delay of all frequency are exactly the same, but it has extra delay of 10.6ms. While IR filter has two options, which provide attenuation of -24dB or -12dB per frequency of frequency range. Its delay is very small, but the characteristics of its group delay are not as good as FIR filter.

4. HPF adjustment

Menu
HPF ON

HPF	OCT	Fc
ON	-24	16

- Adjust the cut-off frequency and slope rate of the upper end of the subwoofer (low pass) .
- FC cutting frequency adjustment range: 10Hz-35Hz.
- OCT slop rate adjustment: -12db/-24db.
- HPF low-pass switch: ON/OFF. When the switch is in OFF, the signal below the deadline of High pass set up will also enter the subwoofer (such as less than 10Hz)
- The subwoofer cannot perfectly respond to the signal of the low frequency. It is recommended to turn on this switch and set the appropriate deadline frequency.

5. Polarity adjustment

Menu
Polarity

Polarity
* 0

Provide two polarities of 0/180 degree, can use the suitable one for different rooms and full frequency speaker characteristic.

Play a piece of music that has rich low frequency. Adjust the phase 0/180 repeatedly, listen carefully in the normal listening position, compare the bass frequency performance, and compare more significantly enhanced.

6. Phase adjustment

Menu
Phase

Phase
* 0

0-180 degree adjustable. One step is 10 degree. After finish the polarity adjustment, there are more or less some phase difference from the positions of full frequency range speaker and subwoofer, we can make some phase adjustments to make them in the same phase status. This can improve the subwoofer quality effectively.

7. Vth (Trigger level adjustment)

Menu
Vth

Vth
-1dB

- Change this value can increase or reduce the response sensitivity of signal automatic boot up.
- Adjustment range: -10db - +10DB.

8. Off Time adjustment

Menu
Off Time

Off Time
Invalid

- Adjustment range: 10 minutes to 120 minutes, each increase or decrease for 10 minutes;
- Invalid: it does not work if the signal shutdown function is dosed.

9. Input Level

Menu
Input Level

Input Level
2Vrms

- Adjustable range: 1Vrms--4Vrms
- Select suitable level to match the input level of the preamp. If the subwoofer's volume is adjusted high but loudness is low, please select lower level. Otherwise, select higher level.

10. VOL Display

Menu
VOL Display

VOL Display
Normal

- Volume display: when volume is selected as Normal, volume display as +.
- When volume is selected as Relative, volume display as -.

11. Mode Reset (factory default the current mode)

Menu
FactoryReset

FactoryReset
Reset ?

- When pressing the MUTE/OK key, the subwoofer will display the current mode name (such as user) and "reset?". Press the MUTE/OK key again, the subwoofer will default the current working parameters settings. Note, this default will not affect other modes.

12. Factory Reset

Menu
FactoryReset

FactoryReset
Reset ?

- When pressing the MUTE/OK key, the subwoofer will ask if you want to do factory default.
- Press the MUTE/OK key again, the subwoofer will default all the parameters.

13. Info

Menu
Info

SW-DXXXX_D5E5
VER: 1. 3

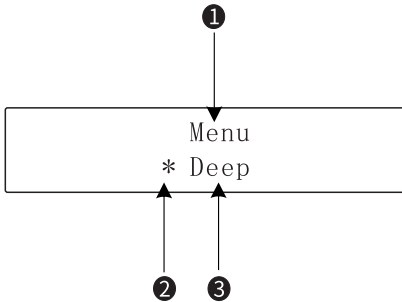
- Here you can check the information of firmware version, equipment name and version time etc.

14. Exit

Menu
Exit

- Exit the menu.

Display screen



① Menu information

Display the current selected menu.

② “*:” symbol

When *: appear, means the status is selected.

③ Display the current sub-menu information.

Mobile Phone APP

- To better experience this machine, we have carefully developed a mobile phone APP which supported by this machine as wireless control.
- You can complete the switches and operations of all the above functions through your mobile phone.
- If you use APP for the first time to control this machine, you need to execute steps (1), (2), (3), and after then you only need to execute steps (3):



Setp (1) Make this machine in a normal working state.

Step(2) When your mobile phone connected to network, IOS equipment can go to App Store to search "TONEWINNER" for downloading the app. Android equipment can go to Google Play for download.

Setp (3) After initiating the APP, search the equipment you want to connect and click to match, then you can control it by mobile phone App.

- Click the “?” question mark icon on App, you can check more operation details of the function.

Subwoofer connections

- It can be connected to multi-channel amplifier, receiver or related devices in different ways.
- If your CD player, AV amplifier, preamp, or multi-channel decoder have corresponding line-out terminal, then you can input the signal through the line input of the subwoofer.
- If the device has balance output, you can input the signal by the balance input terminal of subwoofer.

Note! Be sure to complete all the signal connection before turn on the subwoofer

Enter the signal from the line input

- If the front-end device has RCA SUB OUT (SW/LFE, etc.), please use a RCA signal cable to connect it to the LFE IN terminal of the subwoofer.
- If the front-end device does not have SUB OUT, please use two RCA cables to connect the L/R signal to the Line In terminal of the subwoofer.

Input signal from the balance input terminal

- When your front-end device only have BAL output or when you need to input signal from BAL terminal, please connect a dedicated balance signal to the BAL terminal of the subwoofer.
- Please check if the preamp output wire connector is same as the wire connector of the subwoofer.
PIN1: SIGNAL GND, PIN2: SIGNAL+, PIN3: SIGNAL- .

Subwoofer tests

- Firstly, turn on your audio and video system, set the audio and video system with the correct working mode, ensure the port connected by the subwoofer has signal output, and then turn on the subwoofer, switch the phase to "0" position (Factory default), adjust the volume at half level.
- Play a familiar song with low -frequency music, you should be able to hear the bass played by the subwoofer.
- You can also test the subwoofer with a DVD player, home theater amplifier, preamplifier or surrounding AV decoder. This function can input the audio signal to every speaker in the AV system. Meanwhile, you can use this function to balance and calibrate the volume of each channel, including the subwoofer.
- Note: The subwoofer only responds to the bass signal it received, while most of the times the signal does not contain bass (such as character dialogue, violin performance, quiet scenes, etc.).

Subwoofer adjustments

After completing the system tests, you can achieve the best listening effect by performing the steps below. When you take every step, listen carefully and compare the sound changes, especially the bass. Firstly, play a familiar songs with low-frequency and strong sense of rhythm, then perform the following steps:

Position adjustment

Put the subwoofer in the normal listening position (such as the sofa), adjust the volume to about half level, and then walk around the room. If the bass heard somewhere is obviously stronger, then the subwoofer should be placed in this position. Usually you can find more than one place in this way, please choose a place where it is convenient to connect and use.

Volume adjustment

Adjusting the volume to make the sound of the subwoofer and the sound of main speakers integrate together. The subwoofer is designed to make up for the lack of the bass of your existing AV system, not to suppress their performance. The sound of the subwoofer should be integrated with the sound of the entire system.

Polarity adjustment

Provide two polarities of 0/180 degree, can use the suitable one for different rooms and full frequency speaker characteristic.

Play a piece of music that has rich low frequency. Adjust the phase 0/180 repeatedly, listen carefully in the normal listening position, compare the bass frequency performance, and compare more significantly enhanced.

Phase adjustment

0-180 degree adjustable. One step is 10 degree. After finish the polarity adjustment, there are more or less some phase difference from the positions of full frequency range speaker and subwoofer, we can make some phase adjustments to make them in the same phase status. This can improve the subwoofer quality effectively.

Frequency adjustment

Adjust the frequency range of the low-pass repeatedly, to make the bass of the entire system smooth and integrated.

EQ adjustment

This is a parameter balanced adjustment through DSP and software, which requires certain acoustic knowledge and listening experience. Users who do not have relevant knowledge and experience can directly choose your favorite preset "Mode".

For an EQ point:

- FC (frequency) is the central frequency. The lower the frequency, the lower the sound.
- The Q value represents the impact range of the point. The lower the Q value, the wider the range. The higher the Q value, the narrower the range.
- G is the gain of this point, positive value indicates the increase (the larger the number is, the more increases will be). Negative value indicates the decrease (the larger the number, the more decreases will be).
- The EQ adjustment performed in any mode will be memorized in this mode. When you recall this mode, these adjustments are still valid.

Specifications

SW-D2000:

- Drive unit: 12 "x 1
- Frequency range: 18-240Hz
- Continuous working power: 400W (RMS,3Ω,100Hz,THD<2%)
- Peak power: 2000W
- Power supply: 110-115V~ (60Hz)/ 220-230V~ (50Hz) switchable
- Size: 426 x 440 x 472 mm (W x H x D)
- N.W: about 23kg/piece
- G.W: about 29kg/piece

SW-D4000:

- Drive unit: 12 "x 1
- Frequency range: 16-240Hz
- Continuous working power: 800W (RMS,3Ω,100Hz,THD<2%)
- Peak power: 4000W
- Power supply: 110-115V~ (60Hz)/ 220-230V~ (50Hz) switchable
- Size: 440 x 533 x 558 mm (W x H x D)
- N.W: about 34kg/piece
- G.W: about 42kg/piece

SW-D6000:

- Drive unit: 15 "x 1
- Frequency range: 15-220Hz
- Continuous working power: 800W (RMS,3Ω,100Hz,THD<2%)
- Peak power: 4000W
- Power supply: 110-115V~ (60Hz)/ 220-230V~ (50Hz) switchable
- Size: 480 x 598 x 628 mm (W x H x D)
- N.W: about 42kg/piece
- G.W: about 48kg/piece

SW-D8000:

- Drive unit: 15 "x 2
- Frequency range: 13-220Hz
- Continuous working power: 1500W (RMS,3Ω,100Hz,THD<2%)
- Peak power: 8000W
- Power supply: 110-115V~ (60Hz)/ 220-230V~ (50Hz) switchable
- Size: 526 x 648 x 688 mm (W x H x D)
- N.W: about 70kg/piece
- G.W: about 79kg/piece

SW-D8000PRO:

- Drive unit: 15 "x 2
- Frequency range: 12-220Hz
- Continuous working power: 1500W (RMS,3Ω,100Hz,THD<2%)
- Peak power: 8000W
- Power supply: 110-115V~ (60Hz)/ 220-230V~ (50Hz) switchable
- Size: 930 x 612 x 650 mm (W x H x D)
- N.W: about 85kg/piece
- G.W: about 96kg/piece

SW-D9000:

- Drive unit: 18 "x 1
- Frequency range: 11-200Hz
- Continuous working power: 1500W (RMS,3Ω,100Hz,THD<2%)
- Peak power: 8000W
- Power supply: 110-115V~ (60Hz)/ 220-230V~ (50Hz) switchable
- Size: 630 x 832 x 695mm (W x H x D)
- N.W: about 87kg/piece
- G.W: about 99kg/piece

*Executive standard:GB4943.1,GB/T9254.1,GB17625.1

(Note: The specification may be changed slightly without further notice.)

Equipment Safety Standard: Class I

- Please read the manual and safety precautions carefully before using.
- The product should be mounted somewhere ventilated and dry for the convenience of heat dissipation to avoid moisture and lampblack.
- The safety standard of the machine is Class I; upon installation, the power plug should be connected to 110-115V~/60Hz or 220-230V~/50Hz grid.
- Do not remove the cover during using to prevent electrocution.
- Do not frequently turn it ON or OFF. Wait a few minutes before turning it on again.
- When the equipment fails, contact the product managers where you buy this machine for internal maintenance. To avoid accident, do not open the rear cover for inspection or repair by yourself.
- The plugs, power lines, fuses, power switch, and transformer used on the equipment are all safety parts. Upon change of safety parts, the maintenance department should replace them in accordance with the model and specification specified by our company.

The specification of this product is subjected to change without prior notice!

Problem Shooting

Problem	Reason	Solution
No audio	Power cable not connected, or power switch does not turn on	Connect power supply, turn on power switch.
	Volume set at minimum	Adjust the volume higher
	No low frequency signal input	Check system connection and settings
Bass distortion	Ultra bass amplifier output to its maximum level.	Lower the sub volume or main volume
	Ultra bass amplifier frequency range is too wide	Adjust the frequency range narrower
Distortion at big dynamic or abnormal noise	Audio of too big dynamic (such as Pop noise) make the bass speaker overload	Adjust the sub volume or main volume of the system lower
Buzz noise or Hum noise	Cable connection problem or grounding issue of the home theater system.	Refer to home theater equipment user manual



Scan QR code

Guangzhou ToneWinner Electronics Co., Ltd

Tel.: 86-020-34797660/34796146

Web: en.tonewinner.com

Address: NO.1, Hongsheng 3rd Road, Dashi Street,
Panyu District, Guangzhou, 511430, China