

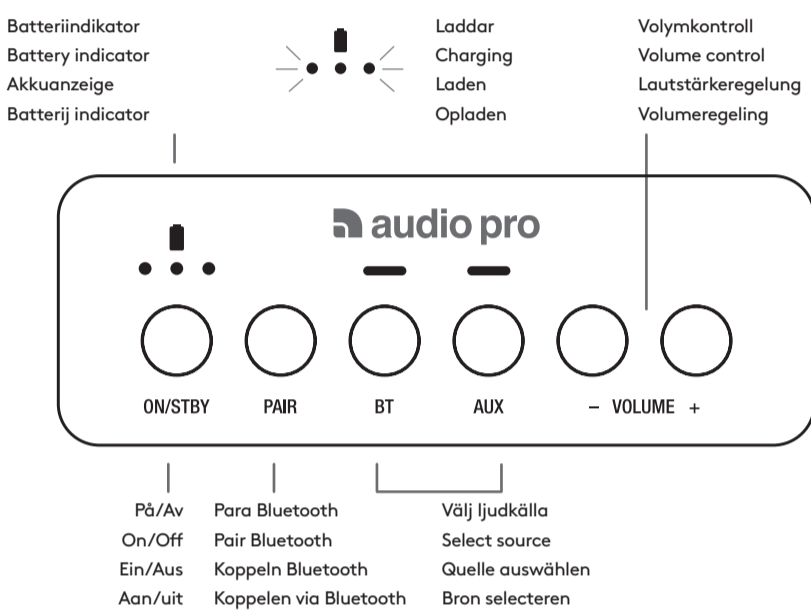


FÖRE ANVÄNDANDE | BEFORE USING | VOR DER VERWENDUNG | VOOR GEBRUIK

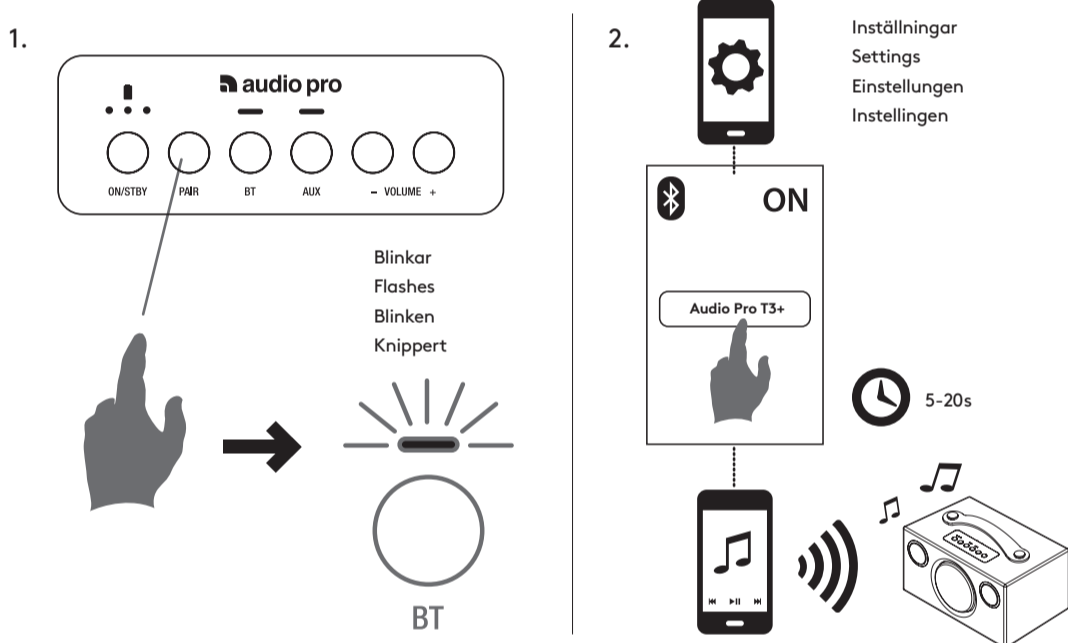


Ladda batteriet fullt innan du använder högtalaren första gången.  
Charge the battery fully before using the speaker first time.  
Laden Sie den Akku vollständig, bevor Sie Lautsprecher ersten Mal verwenden.  
Laad de batterij volledig op voordat u de luidspreker eerste keer.

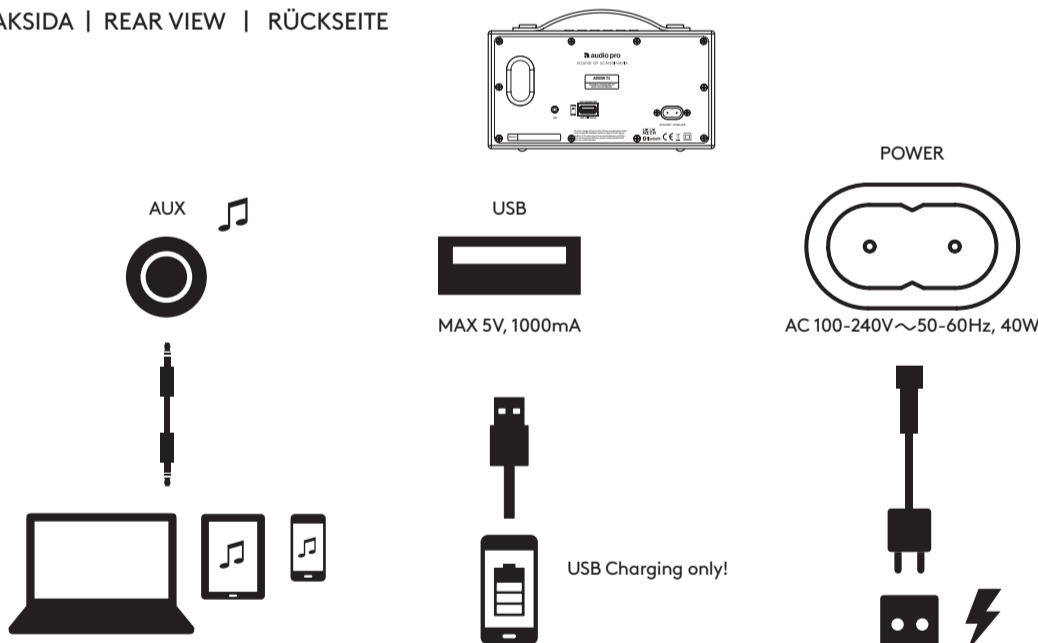
KONTROLLER | CONTROLS | SCHALTAFEL | BEDIENUNGSELEMENTEN



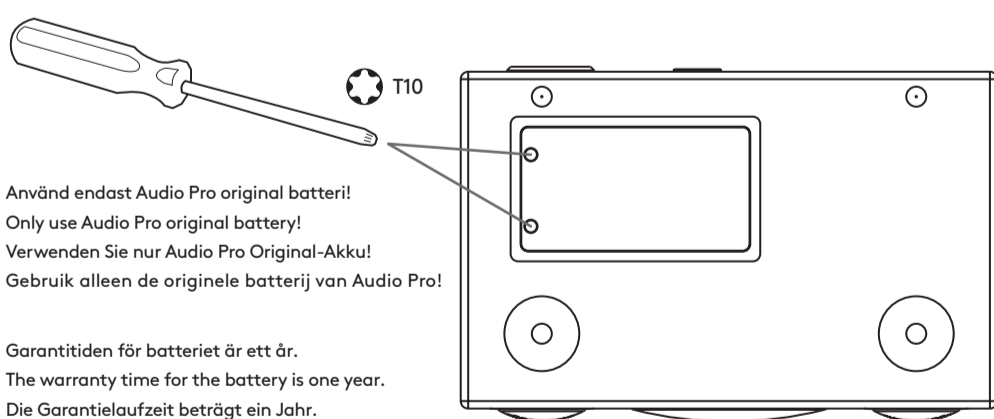
PARA | PAIR | KOPPELN



BAKSIDA | REAR VIEW | RÜCKSEITE



BYTA BATTERI | CHANGE BATTERY | BATTERIE WECHSELN



This equipment is a Class II or double insulated electrical appliance. It has been designed in such a way that it does not require a safety connection to electrical earth. Warning! Disposal of a battery into fire or a hot oven, or mechanically crushing or cutting of a battery, that can result in an explosion. Leaving a battery in an extremely high temperature surrounding environment that can result in an explosion or the leakage of flammable liquid or gas. A battery subjected to extremely low air pressure that may result in an explosion or the leakage of flammable liquid or gas.

